

# ODYSSEA

## ADDED-VALUE INFORMATION SERVICES TO SUPPORT PORTS OPERATION AND SAFETY

ATELIER DE VALIDATION DE LA PLATEFORME DE DONNEES PAR LES UTILISATEURS ET DE  
FORMATION A L'OCEANOGRAPHIE OPERATIONNELLE

Adélio Silva

HIDROMOD

[adelio@hidromod.com](mailto:adelio@hidromod.com)



This project has received funding from the European Union's Horizon 2020 research and innovation programme under grant agreement No 727277

# What does it means operational?



In this context operational means a service capable to provide information daily required to manage or operate an activity or to support the response to crisis situations.

This means to provide the most updated data (in real time whenever possible) and the capability to deliver forecasts for the near future and the capability to work out the data to produce information that can be effectively used in those activities.

Due to the need to keep the service daily running, its set-up and maintenance requires the support of some kind of “intelligence” capable to autonomously perform a chain of actions that goes from automatically acquiring and format data from different data providers to run models and algorithms and publishing information in formats easily understandable for the target users.

The Ports Operational Service **is part of a wider service** for provision of Coastal and Marine Environment, Marine Safety, Marine Resources and Marine Weather Forecasting.

Delivers **tailored information** (**readily available, easily understandable** and with **proper resolution**) through an operational service chain supported by **MARINOMICA** and **AQUASAFE platforms**.

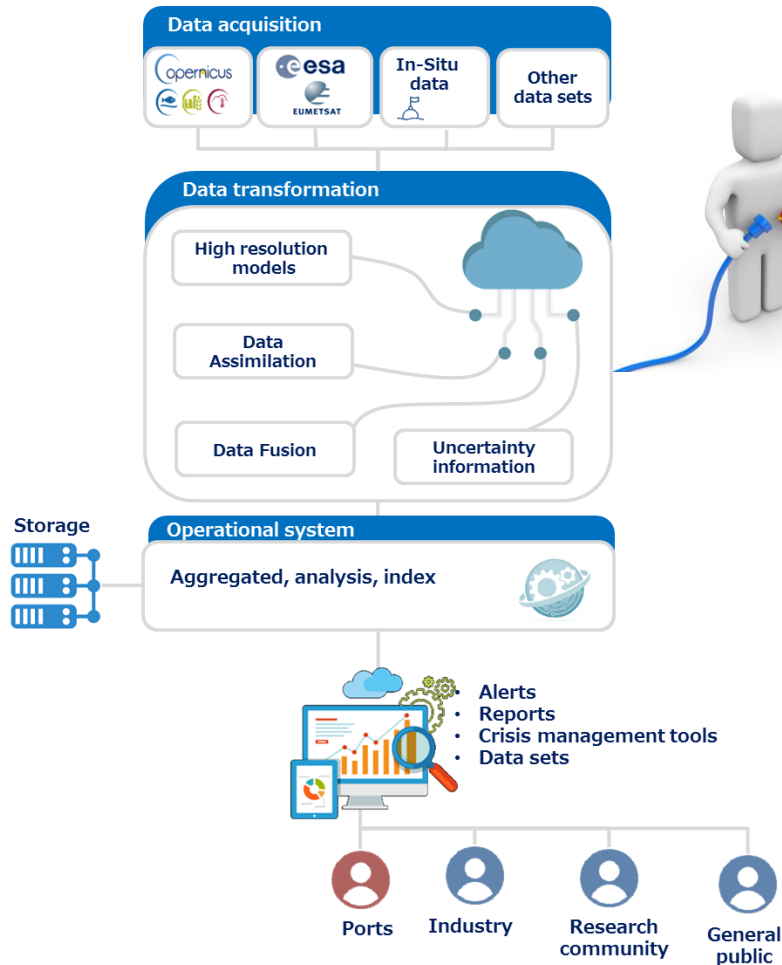
Fully exploit the synergies between **forecasts** and **data** acquired through different sources, different platforms and at different scales

Addressed to professional users such as **port** authorities, **environmental** authorities, **civil protection** services or **pollution response** authorities.

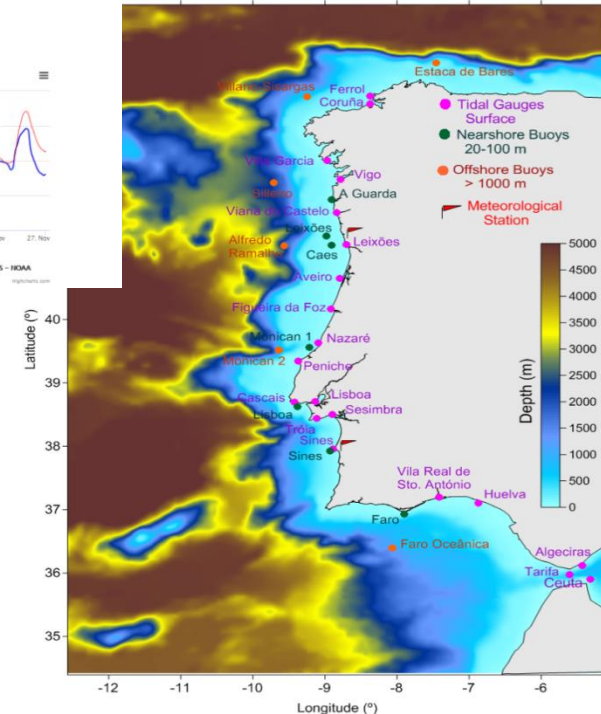
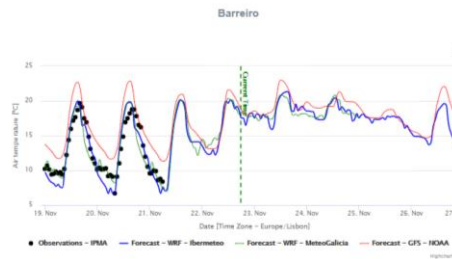
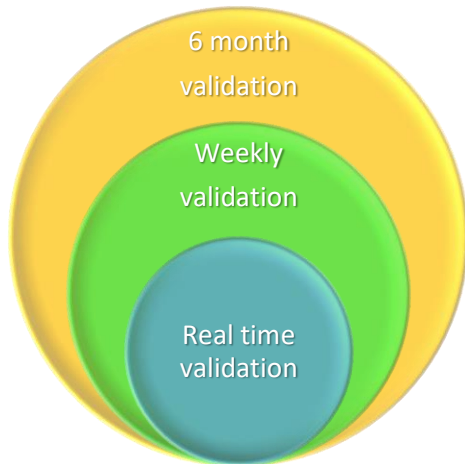
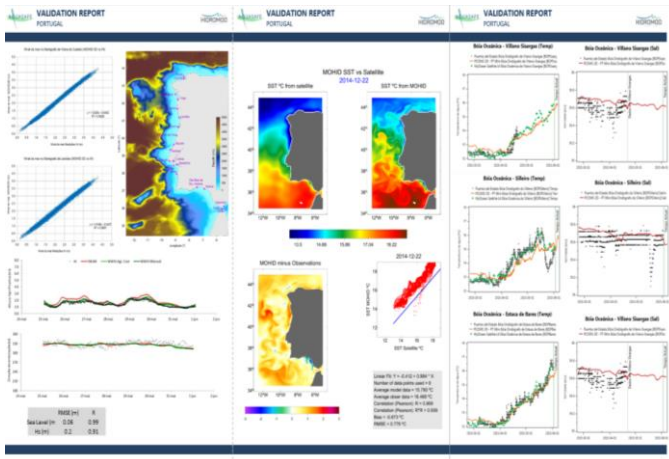
# A full integrated service capable to fulfil the needs of multiple users



ODYSSEA



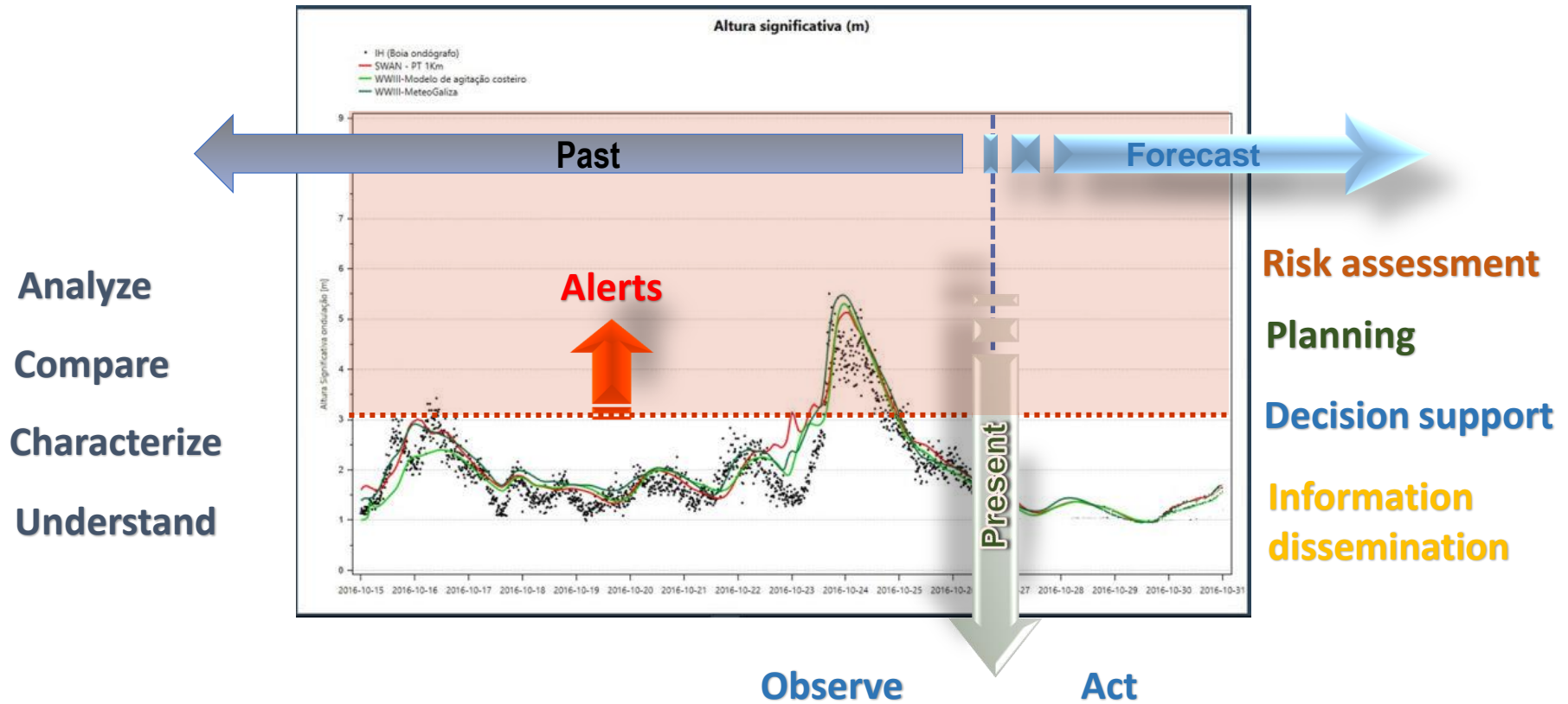
# A continuous validation process



# Learn with the past and prevent the future



ODYSSEA

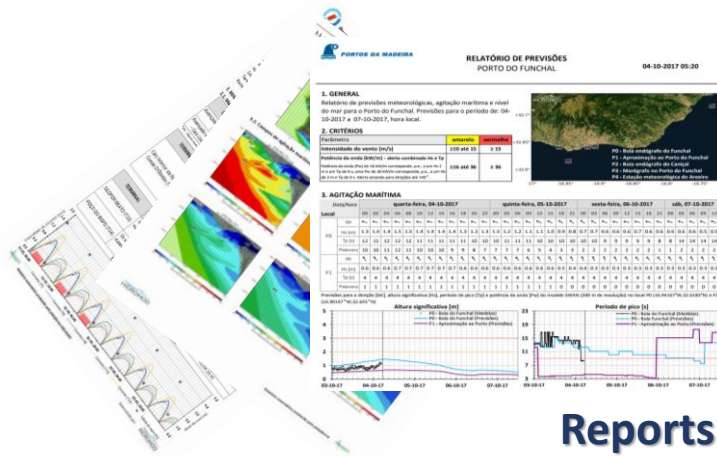




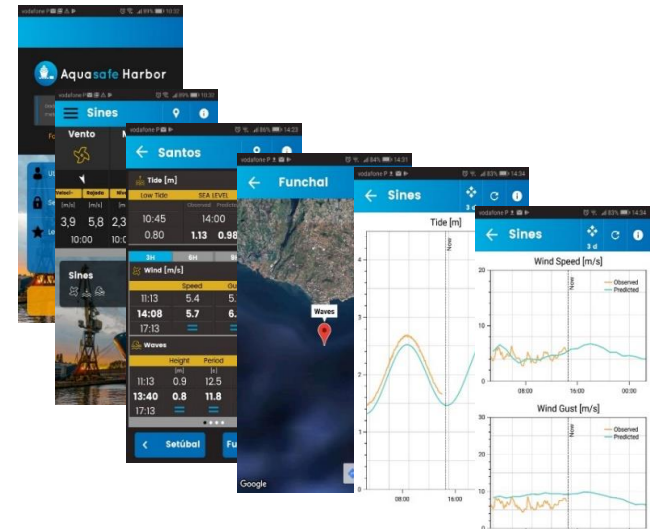
# Different service distribution media



ODYSSEA



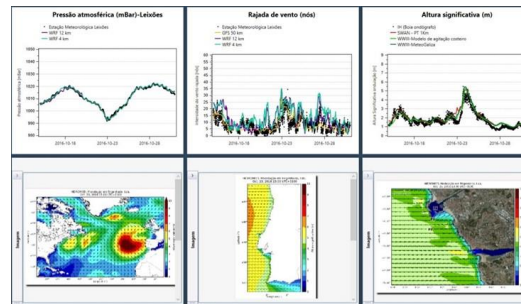
Reports



Mobile App



Web



Video wall

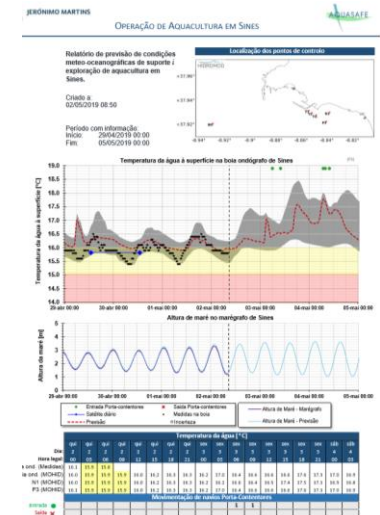


# Benefits for Clients

On time alerts based on user's defined constraints

Support to frame responsibility in relation to incidents or potential conflicting decisions (availability of data to justify the decisions or the eventual lack of responsibility)

Improved relations with the local society (better public image)

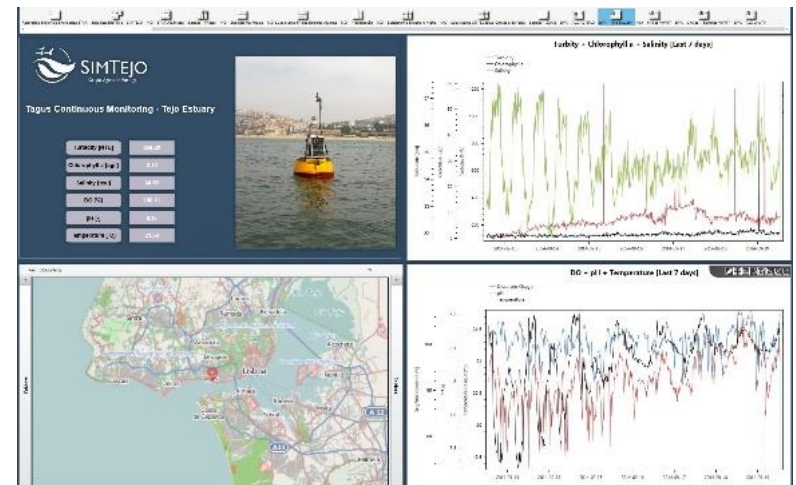




# Benefits for Clients

Availability of audited and validated information focused on user' specific requirements through a single access point (including real time data and high resolution forecasts)

- lower risks in decision making
- improved safety
- better operations planning
- contribution to a safer environment





ODYSSEA

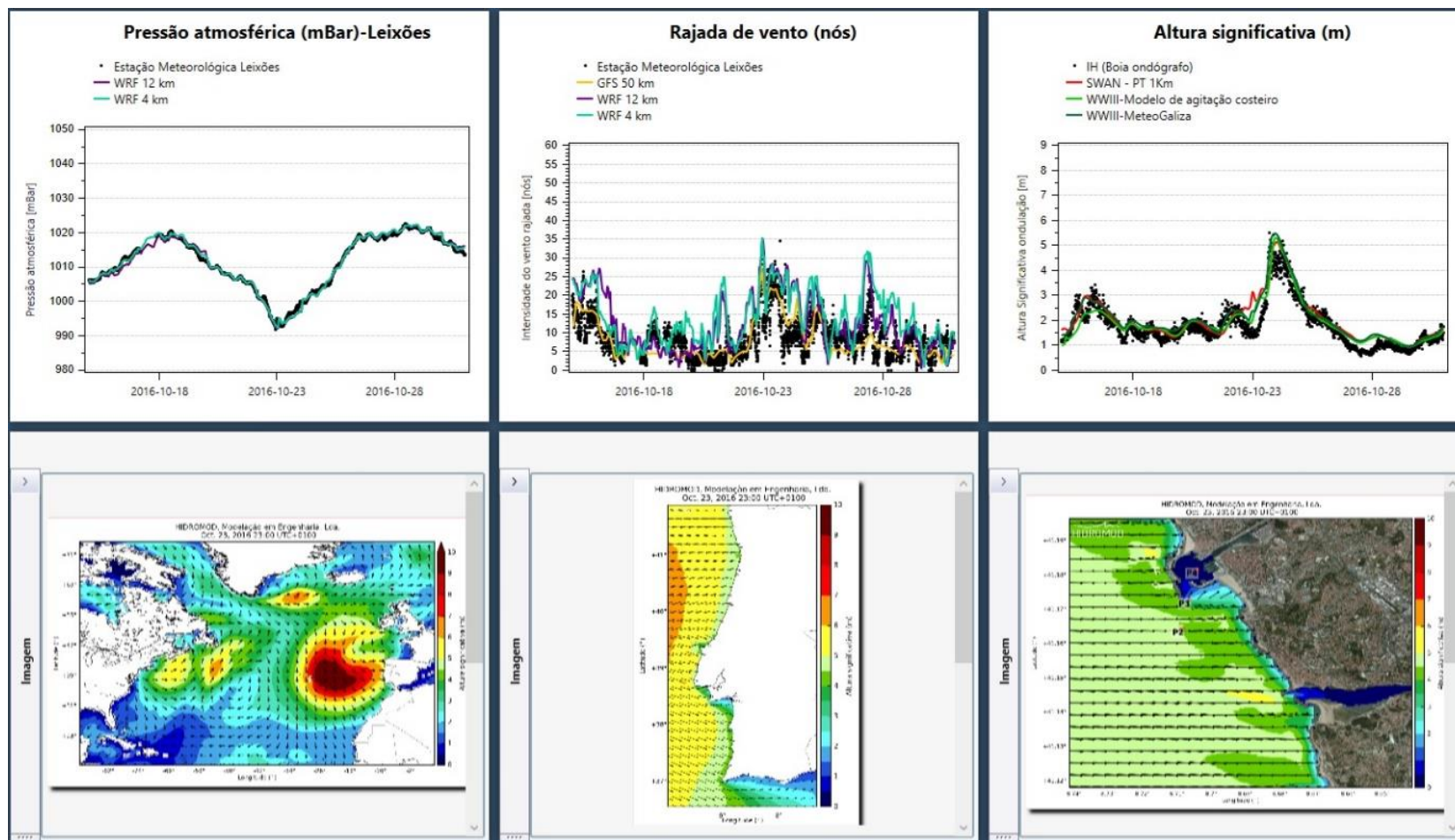
---

# Some Examples

# High Resolution Meteo-Oceanographic Forecasts



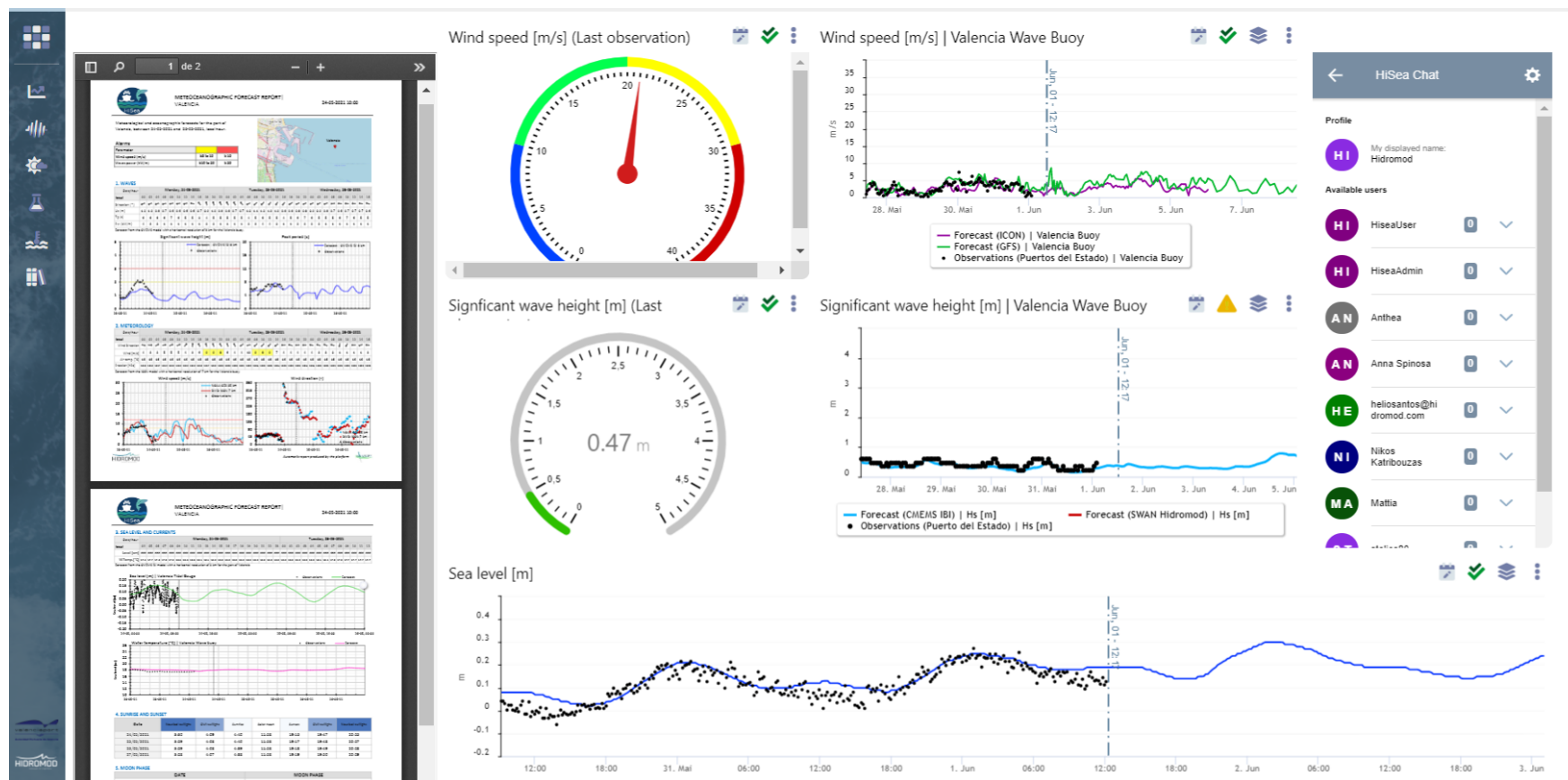
ODYSSEA



# High Resolution Meteo-Oceanographic Forecasts



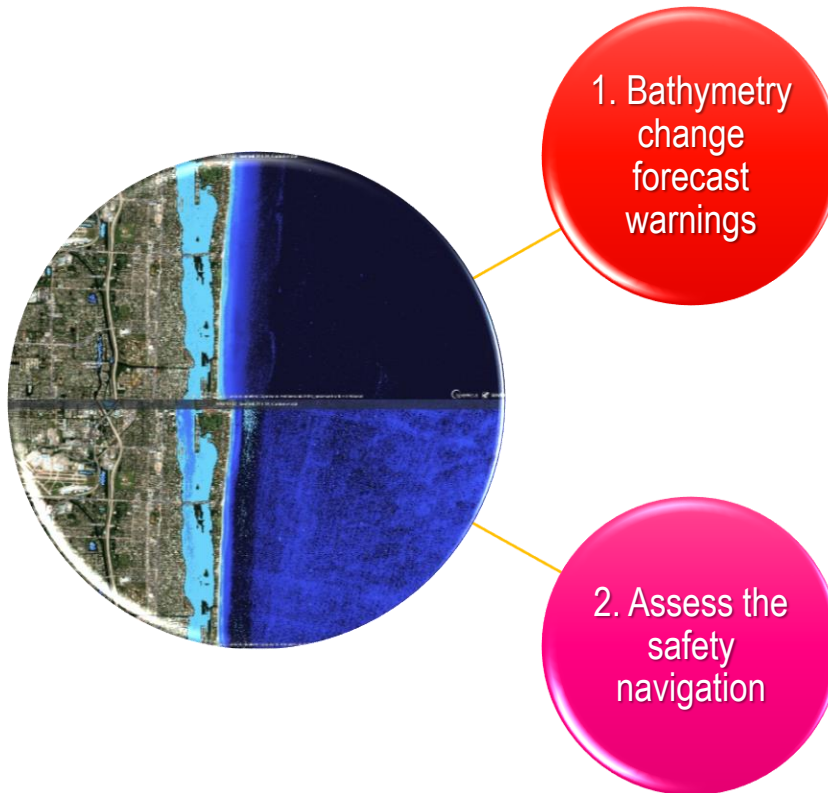
ODYSSEA



# Bathymetry related services



ODYSSEA

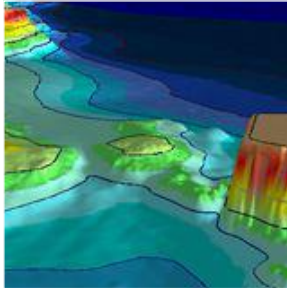


- Develop a bathymetry changes service to issue alerts in case of existence of depths below the required level and keep an historical record of all bathymetric surveys
- Simplified service to assess the safety conditions navigation of a particular ship in a port, using updated bathymetry (Dynamic Under Keel Clearance).

# Assess the safety navigation (DUCK\*)

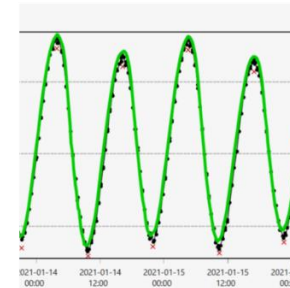


ODYSSEA



**PURPOSE:** A system that allows assessing the safety conditions of a ship (with certain characteristics) can enter a port, using updated bathymetry.

**INPUT:** The system integrates information of the tide, waves, vessel data to model the vessel's movement during the proposed transit and hydrographic survey data using updated bathymetry from Satellite-derived bathymetry.



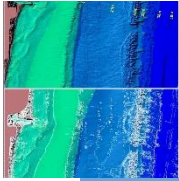
**SYSTEM:** To predict the clearance under the keel of a vessel based on the vessel's characteristics, environmental conditions and detailed navigation channel depths.



# Bathymetry related alerts

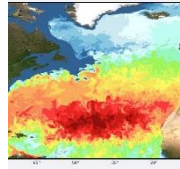


ODYSSEA



## Purpose

- Keep record of bathymetric all bathymetric surveys (using local surveys, satellite images or other data sources) to identify situations that may pose safety concerns to navigation



## Concept

- Analysis of consecutive bathymetry data sets and identify significant bathymetric changes;
- Identify locations where depths are below the navigation requirements (design channel)

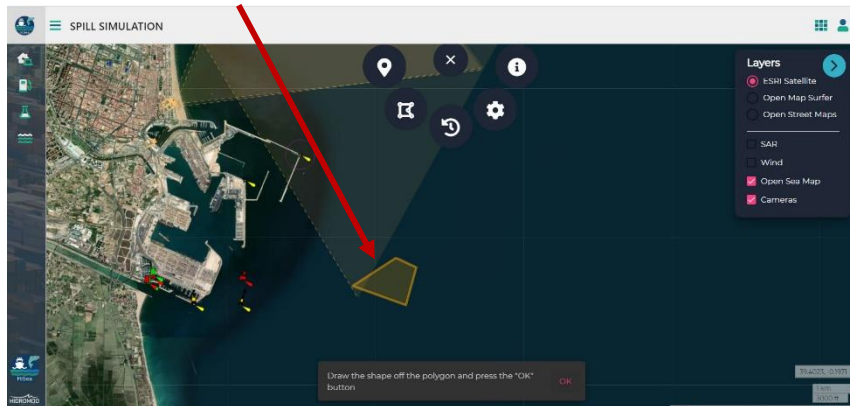


## System

- Issue of alerts whenever any concerning condition is met.

# Oil Spill Simulator: a simple 4 steps procedure

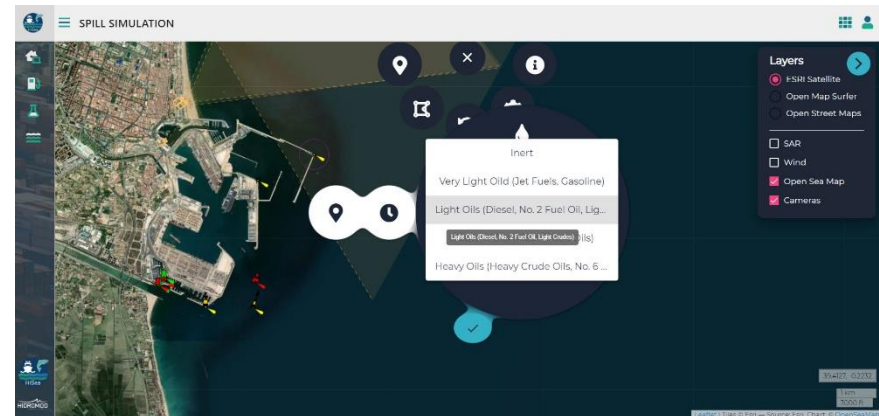
## 1. Select a spill location



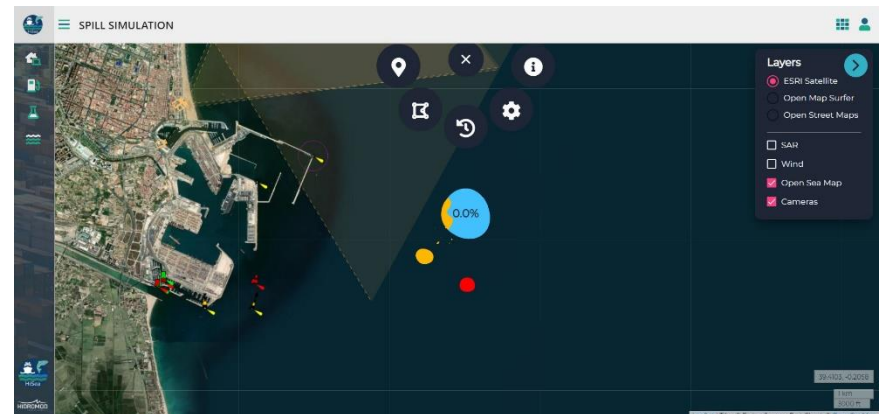
## 2. Select a simulation period



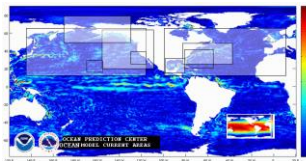
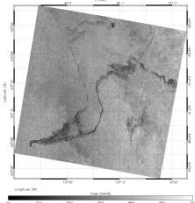
## 3. Select a product (oil) type



## 4. Perform the simulation



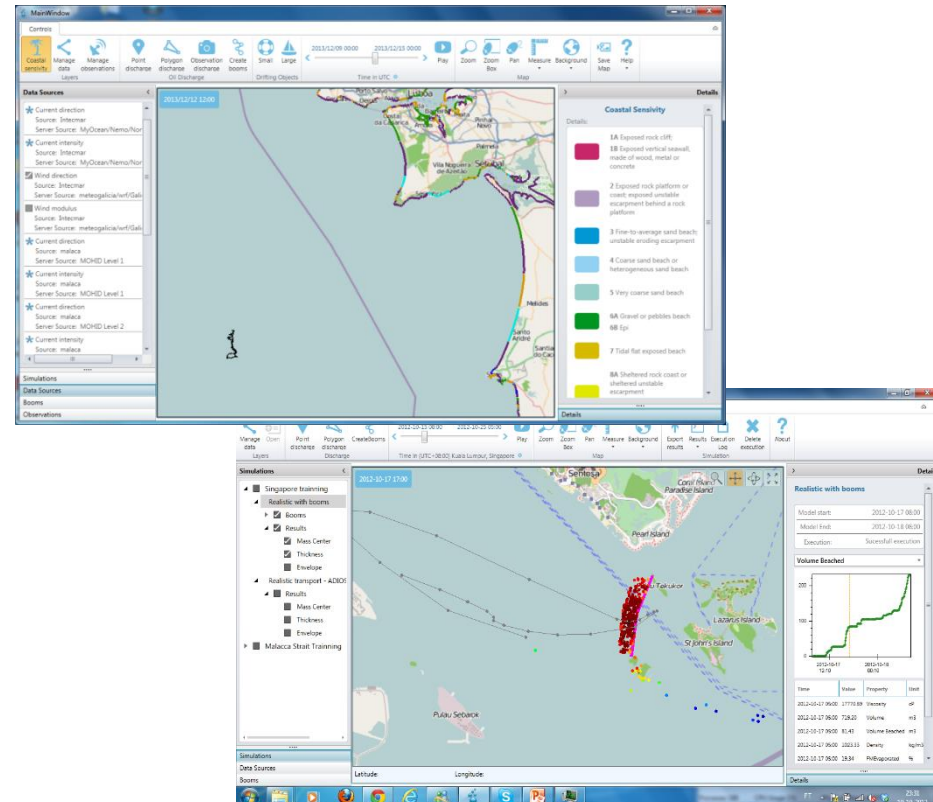
# Application to marine pollution prevention and response



Observations  
(e.g. SAR, plane, etc)

Forecasts (wind,  
currents, waves)

Coastal sensitivity



The same procedure may be used to track floating objects such as debris or plastic

# Other possible services

The services **may include** relevant information regarding the ports environmental concerns related both with **water quality** and **air quality** issues

A **risk assessment** and **emergency** service capable to provide support in the case of accidental release of hazardous materials with different release scenarios, evaporation, chemical fires, explosion and spills in air or water. Continuous modeling and short term forecasts make the system immediately "ready" for emergency simulations



# To conclude...

AQUASAFE delivers advanced high resolution forecast services providing:

- A **unique access point** to different meteorological and oceanographic **data sources** and **forecasts**
- High resolution meteorological and oceanographic forecasts providing reliable information on the required locations and with the **required time and space scales**
- **Automatic reports** and **alerts** personalized according to users' requests
- Support to **marine pollution** prevention and response actions and **search and rescue** missions
- Continuous model **validation** results (check of forecast level of confidence)
- An **easy-to-use tool** to support the forecast of transport, dispersion and fate of an **pollution** at sea

# THANK-YOU

Adélio Silva

HIDROMOD

[adelio@hidromod.com](mailto:adelio@hidromod.com)



This project has received funding from the European Union's Horizon 2020 research and innovation programme under grant agreement No 727277